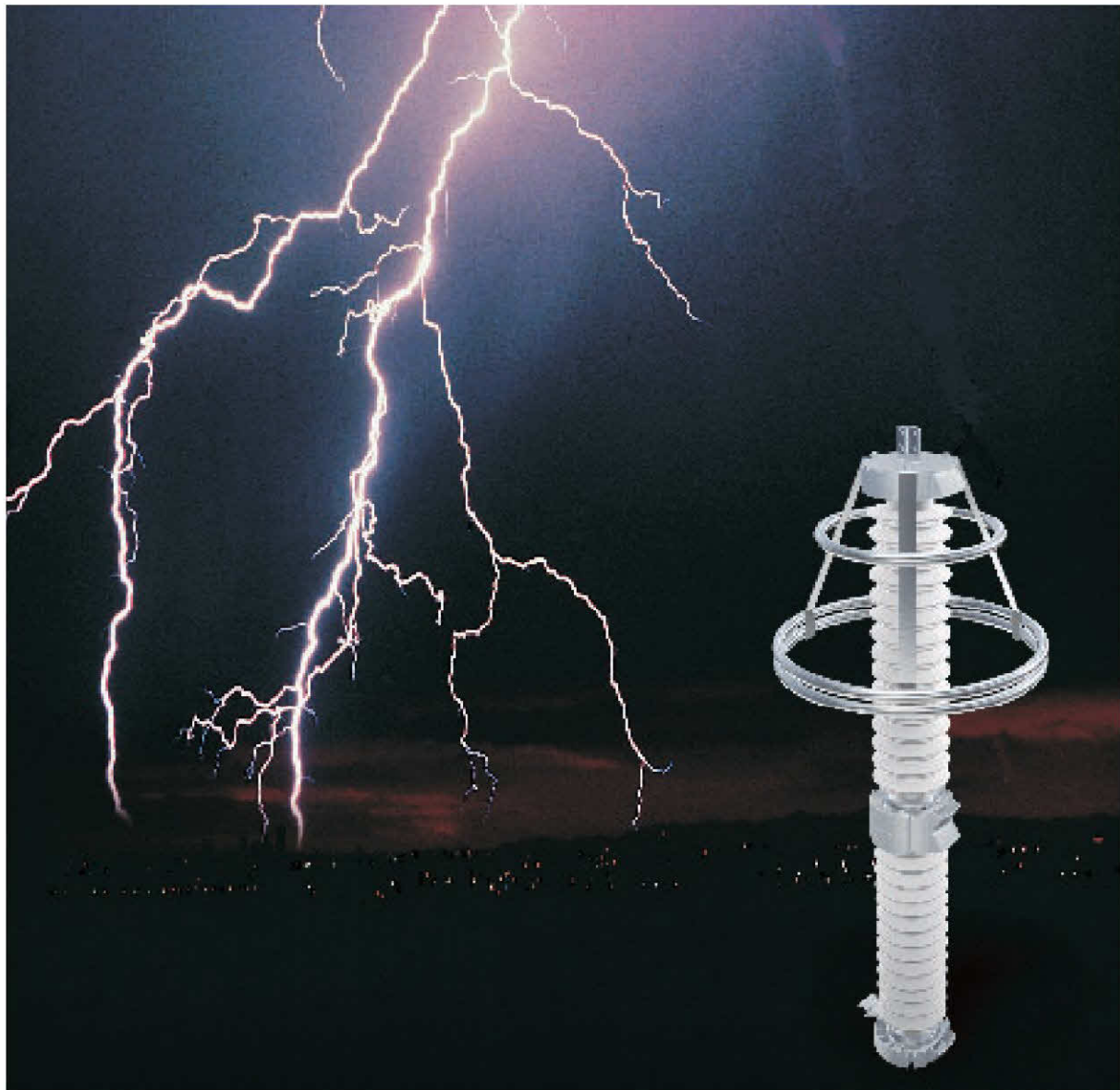


# EXLIM Q

Surge Arrester - System Voltage 2 to 420 kV



**ABB**

## Metal Oxide Surge Arrester EXLIM Q



Protection of switchgear, transformers and other equipment in high voltage systems against atmospheric and switching overvoltages. For use when requirements of lightning intensity, energy capability and pollution are moderate.

### Application

The Exlim Q gapless metal oxide arrester meets or exceeds all Station Class requirements of ANSI C62.11 (IEEE Standards for Metal Oxide Surge Arresters for AC Power Circuits). The EXLIM Q arrester is designed to meet the following performance data:

### Performance data

Maximum system voltages ( $V_{M1}$ )	2.52 - 120 kV <sub>rms</sub>
Duty cycle rated voltages ( $V_r$ )	3 - 336 kV <sub>rms</sub>
Classifying current (ANSI/IEEE)	10 kA <sub>peak</sub>
Discharge current withstand strength:	
High current 4/10 $\mu$ s	100 kA <sub>peak</sub>
Low current 2000 $\mu$ s	900 A <sub>peak</sub>
Energy capability:	
2 impulses, (IEC Cl. 7.5.5)	9.8 kJ / kV of MCOV
Fulfills requirements of ANSI transmission-line discharge test for 420 kV systems.	
Short-circuit / Pressure relief capability:	
Ratings 3 - 39 kV	65 kA <sub>rms sym</sub>
Ratings 45 - 336 kV	80 kA <sub>rms sym</sub>
Cantilever strength (DIN 48113)	5530 ft - lbs / 7500 Nm
Service conditions:	
Ambient temperature	-40 °C to + 45 °C
Design altitude	6000 ft / 1830 m
Frequency	15 - 62 Hz

1) Higher strength designs available on request

2) Higher altitude designs available on request

# Nameplate

<b>ABB</b>		ABB Inc.	
TYPE EXLIM STATION CLASS SURGE ARRESTER			
STYLE NO.	SERIAL NO.	PRESSURE RELIEF CLASS	
RATING		MCOV RATING	WEIGHT
UNIT STACKING ORDER		MCOV KV	ALTITUDE 6000 Ft.
UNIT STYLE NO.	UNIT SERIAL NO.		GRADING RING ASSEMBLY
1ST			
2ND			
3RD			
BEFORE INSTALLING READ INSTRUCTIONS IL 38-336-1		MADE IN U.S.A.	

# Outlines

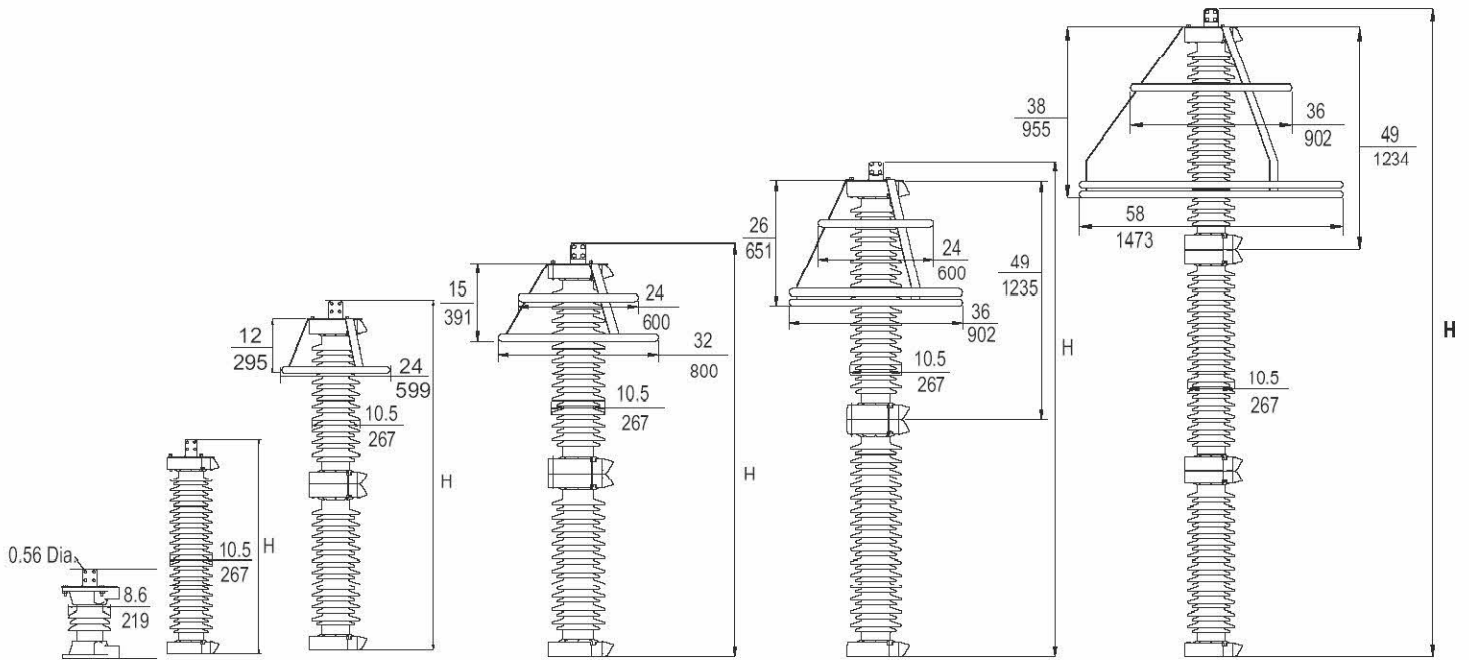


Figure 1

Figure 2

Figure 3

Figure 4

Figure 5

Figure 6

